

MCD

350ps



MCD RealSubns®

Q

355nm 266nm

1064nm 532nm

CEM

300ps

100μJ

偏振方向稳定性高

0.1kHz

TEM₀₀

光学参数

(nm)	1064	532	355	266	
(kHz)	0.1	0.1	0.1	0.1	
(mW)	10	3	1.5	0.5	
(μJ)	100	30	15	5	
(ps)	350	300	300	300	
(8h)	±3%				
	TEM ₀₀				
Typ.(mrad)	@1/e ²	12	10	8	8
	@1/e ²	12	10	8	8
	>100:1				

系统参

	100-240 VAC 50/60 Hz	
	RS232	USB
(W)	25	
(W×H×L,mm)	168×88×140	
(W×H×L,mm)	45×30×120	
()	15-35	
()	0-60	

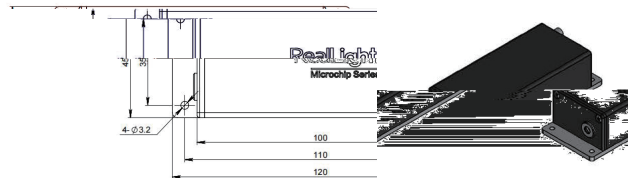
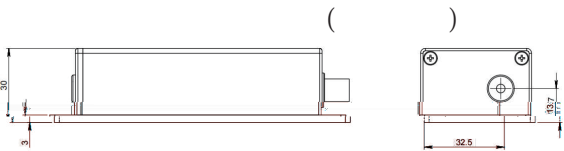
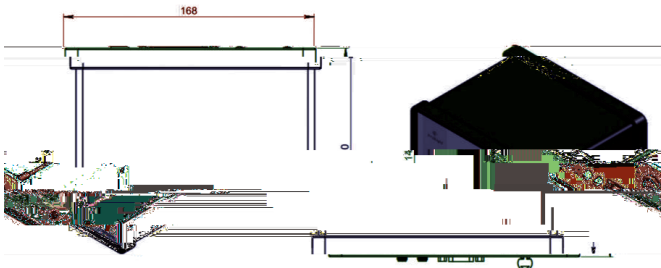
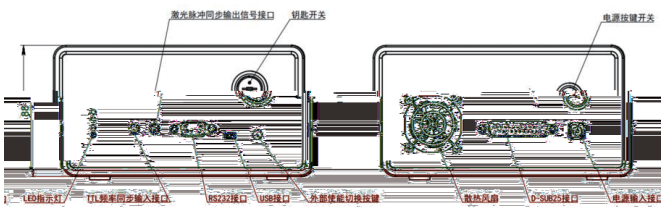
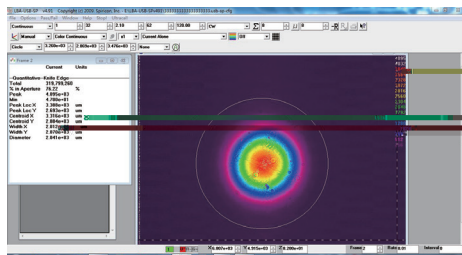
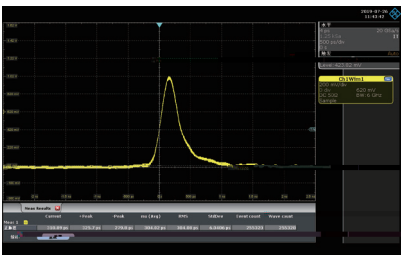
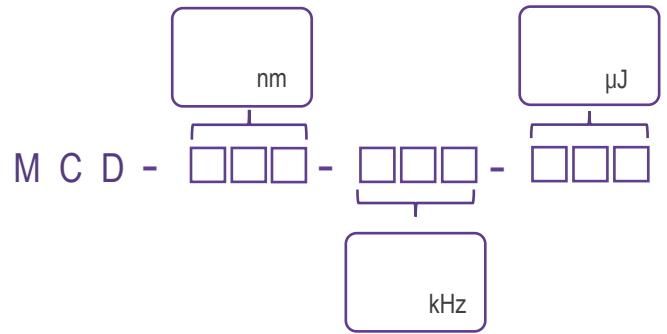
- 1.
- 2.
- 3.

2mrad

CEM



波长 型号



()

