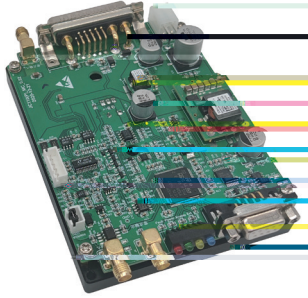




MCA-R

1.5ns



MCA RealSubns®

Q

便

OEM

1064nm&532nm 1064nm&355nm

1.5ns

200 J

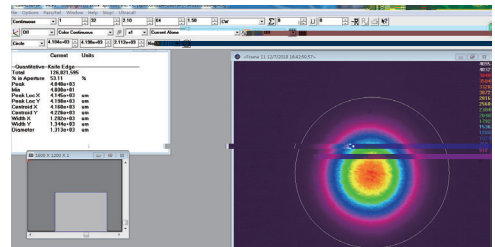
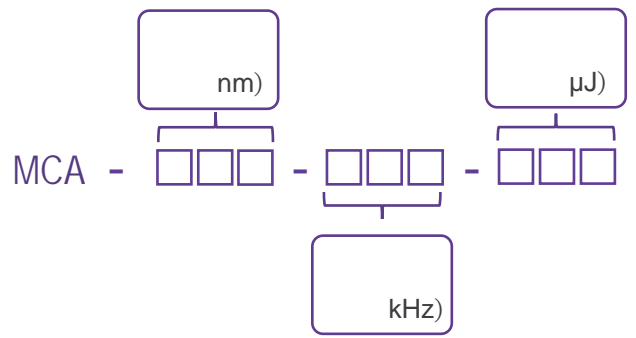
2.5kHz

TEM₀₀

光学参数						
(nm)		1064		532		
(kHz)	1*	2.5	2.5*	1*	2.5	2.5*
(mW)	200	300	500	100	150	250
(μJ)	200	110	180	100	55	90
(ps)		2000			1500	
(8h)				±3%		
				TEM ₀₀		
Typ.(mrad)	@1/e ²	3			2.5	
	@1/e ²	3			2.5	
				>100:1		
				100-240 VAC	50/60 Hz	
				RS232	USB	
(W)	20	20	25	20	25	25
(W×H×L,mm)			90×32.6×120			
(W×H×L,mm)			45×30×120			
()			15~35			
()			0~60			

1. * ()
 <20kHz >20kHz TTL 5V SMA

2



mm

