

# MCD OEM

## 350ps-2ns

MCD RealSubns®

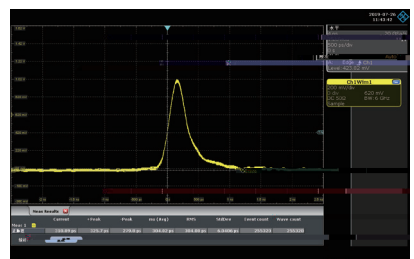
Q

OEM

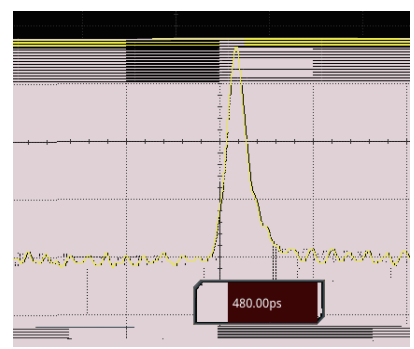
1-2mJ

350ps  
300μJ

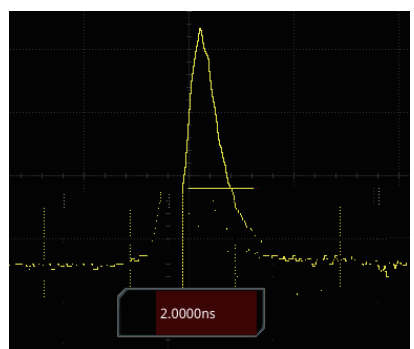
- 偏振方向稳定性高
- TEM<sub>00</sub>
- 结构紧凑，高可靠性
- 双脉宽输出可选
- 红光指示可选



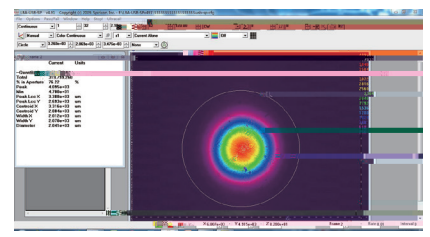
300ps



500ps



2ns



光学参数				
(nm)	1064			
(kHz)	0.01			
(mW)	3	3	3/3	
( J)	300	300	300/300	
(ps)	500	350	500/2000	
(8h)	±3%			
TEM <sub>00</sub>				
Typ.(mrad)	@1/e <sup>2</sup>	10	6-4	
	@1/e <sup>2</sup>	10	6-4	
	P	>100:1	500ps-P	>100:1
			2ns-S	>100:1
系统参数				
	12V 2A			
	SMA			
(W)	10			
(W×H×L,mm)	68×35×120	100×23×100		
(W×H×L,mm)	45×30×120	145×70×46		
( )	15~35			
( )	0~60			

波长

型号

重复频率

单